



# PSD2 Inspired Functionality for Corporate Banking ASPSPs



We architect & deliver online projects for  
clients with big ambitions

Risk Control, Trends & Financial Management

The real time, multi-bank tools available to the Corporate Treasurer is already significantly more advanced than that available to the consumer

SWIFT provides single view account balances, accountancy software provides management accounts and much of the payment processing is automated. Businesses have also invested in integrating various operational, HR and finance systems to better meet their needs.

## Introduction

### Tools

- Intuitive dashboard
- Actions
- One click payments (+ defer / transfer)
- Financial product recommendation
- Multi account Financial management
- Price improvement
- Risk advisor
- Forecasting tool
- Asset management
- User management
- Currency hedging
- WYSIWYG Report builder
- Real time management accounts
- Machine Learning

### Behind the scenes

- Live quoting
- Security
- Testing



### Feeds

- Exchange rates
- Stock markets
- Accounting API (SAP/Xero/Quickbooks/Sage)
- tradingeconomics.com
- Banks

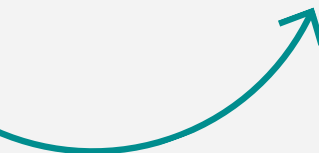
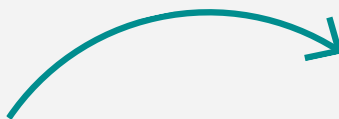
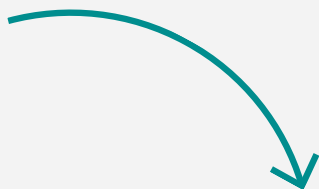
### Features

- Cash management
- Bot (customer service and tools)
- Shared insight cross platform
- Intelligent alerts
- Economic & financial trending
- Voice search
- ROI / Yield
- Auditing
- UX led
- SSO

### Partners

- Google Cloud
- Salesforce
- Yodlee
- Realex Payments
- Twilio
- Akana
- Gupshup
- Moxtra
- AWS

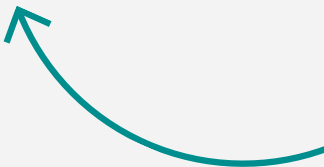
Intelligence led



**Foreign Exchange**



**Financial Products**



## Features

### Intelligent Dashboard

Anika is Manager of Accounts. The Intuitive, Intelligence driven Dashboard helps her to make informed decisions, and action them quickly.

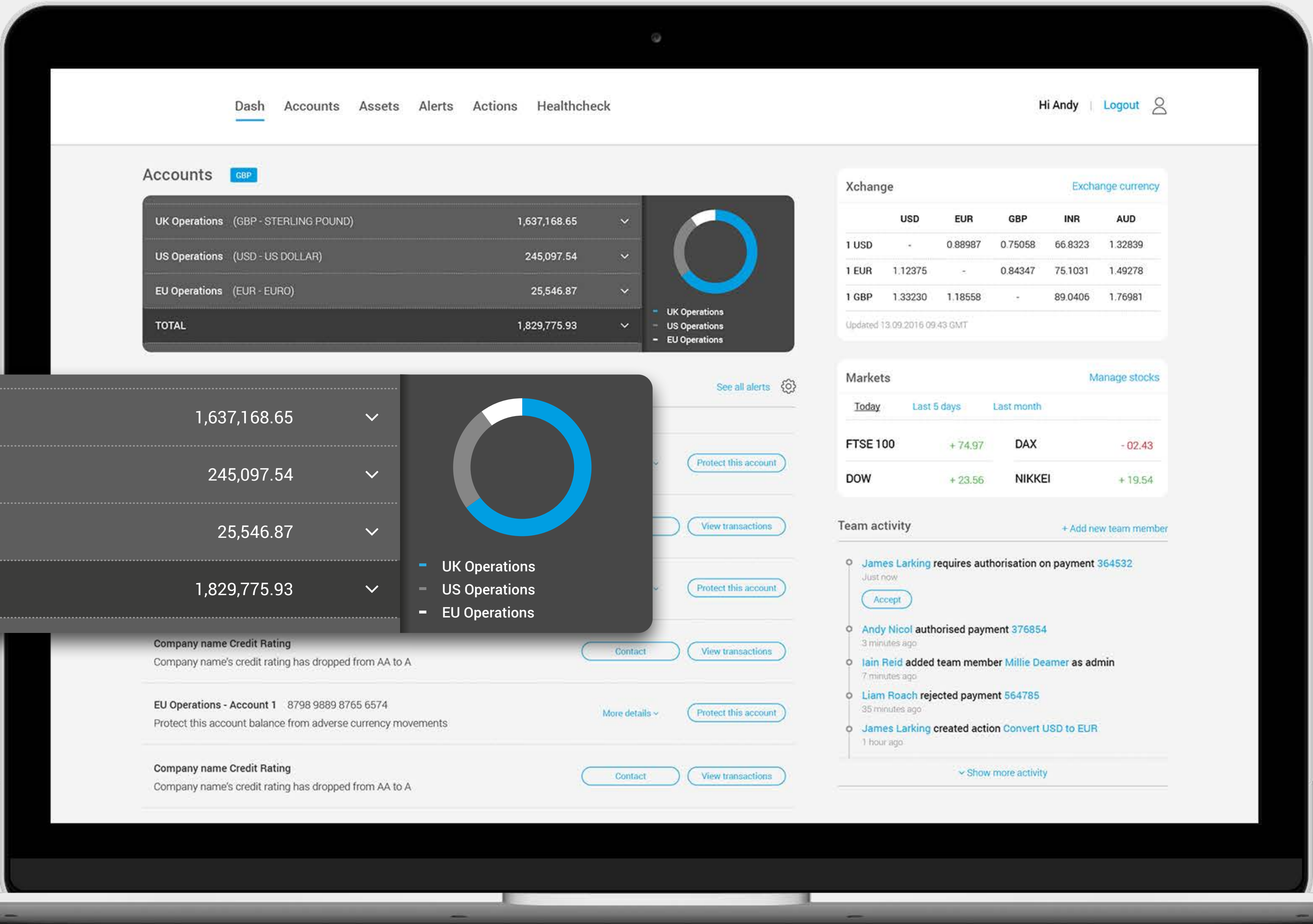




Features

Dashboard

- Multiple supplier feeds
- Cheap, modular SaaS
- Integrated comms



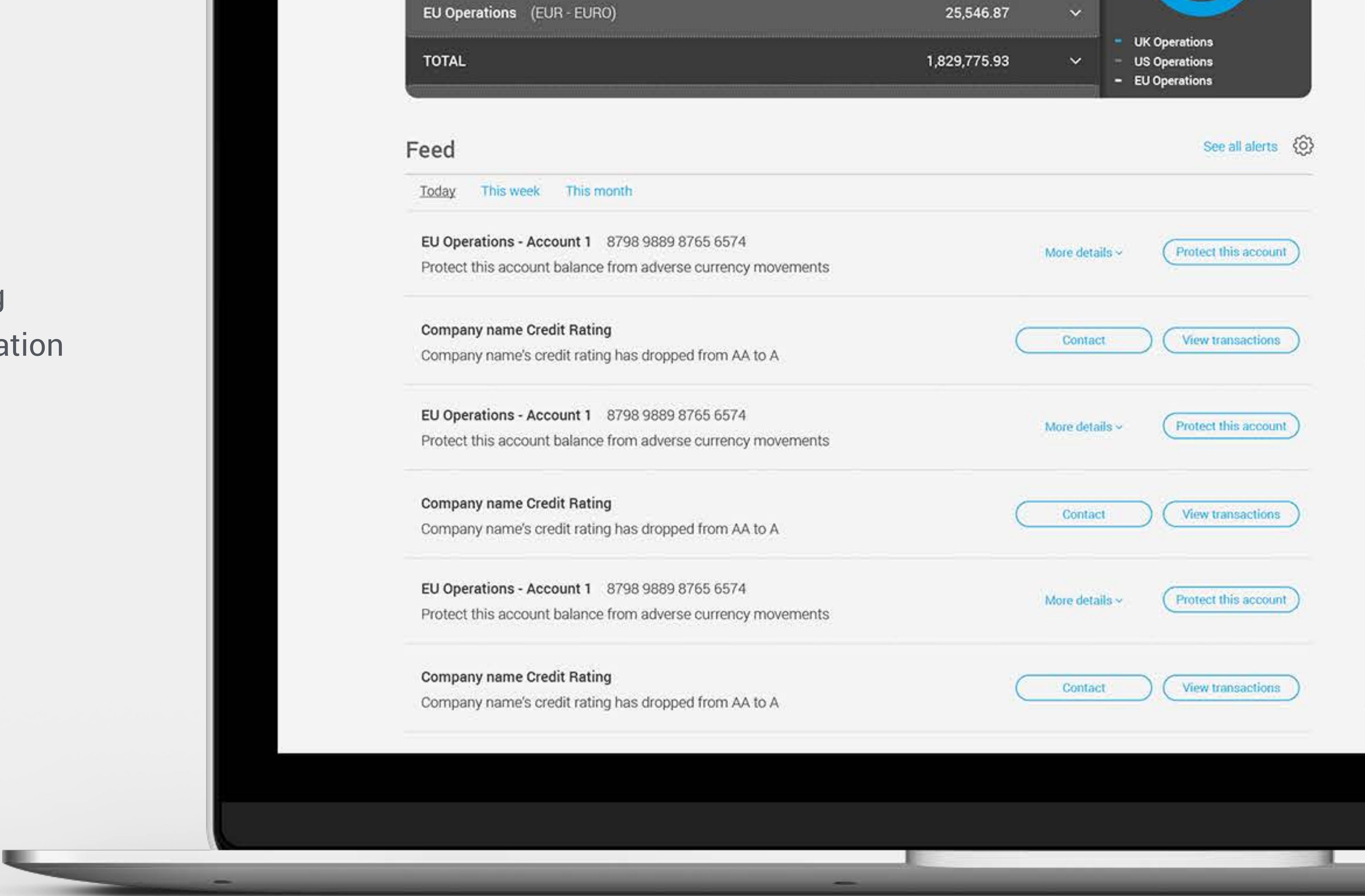


Features

Dashboard

Alerts (and solutions)

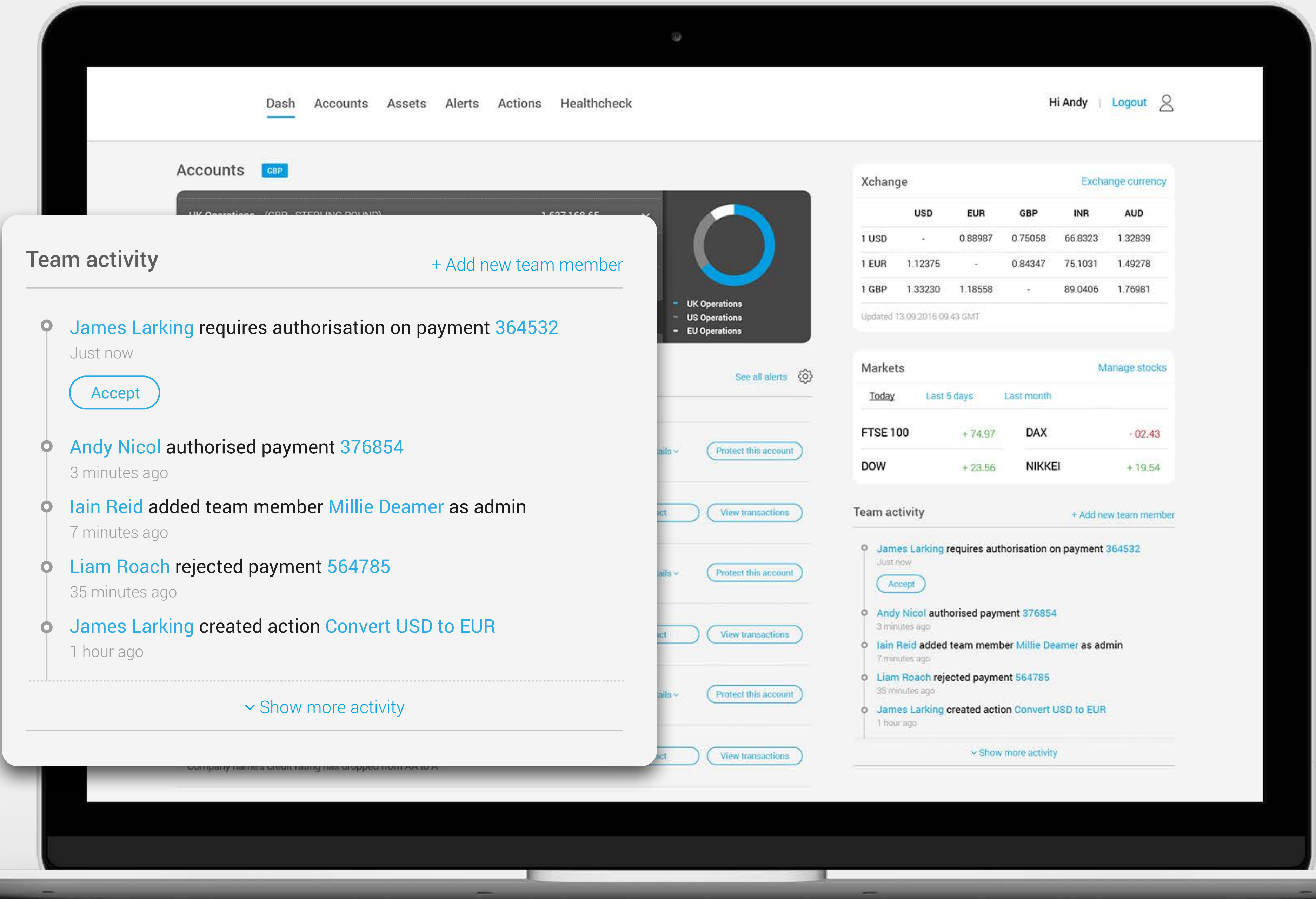
- early risk forecasting
- recommended mitigation



Features

Dashboard

- Team collaboration





## Features

### Health Check

Peter can utilise Health check to see a points based, aggregated risk assessment of the business. Health check offers intelligence based solutions for Peter to action.

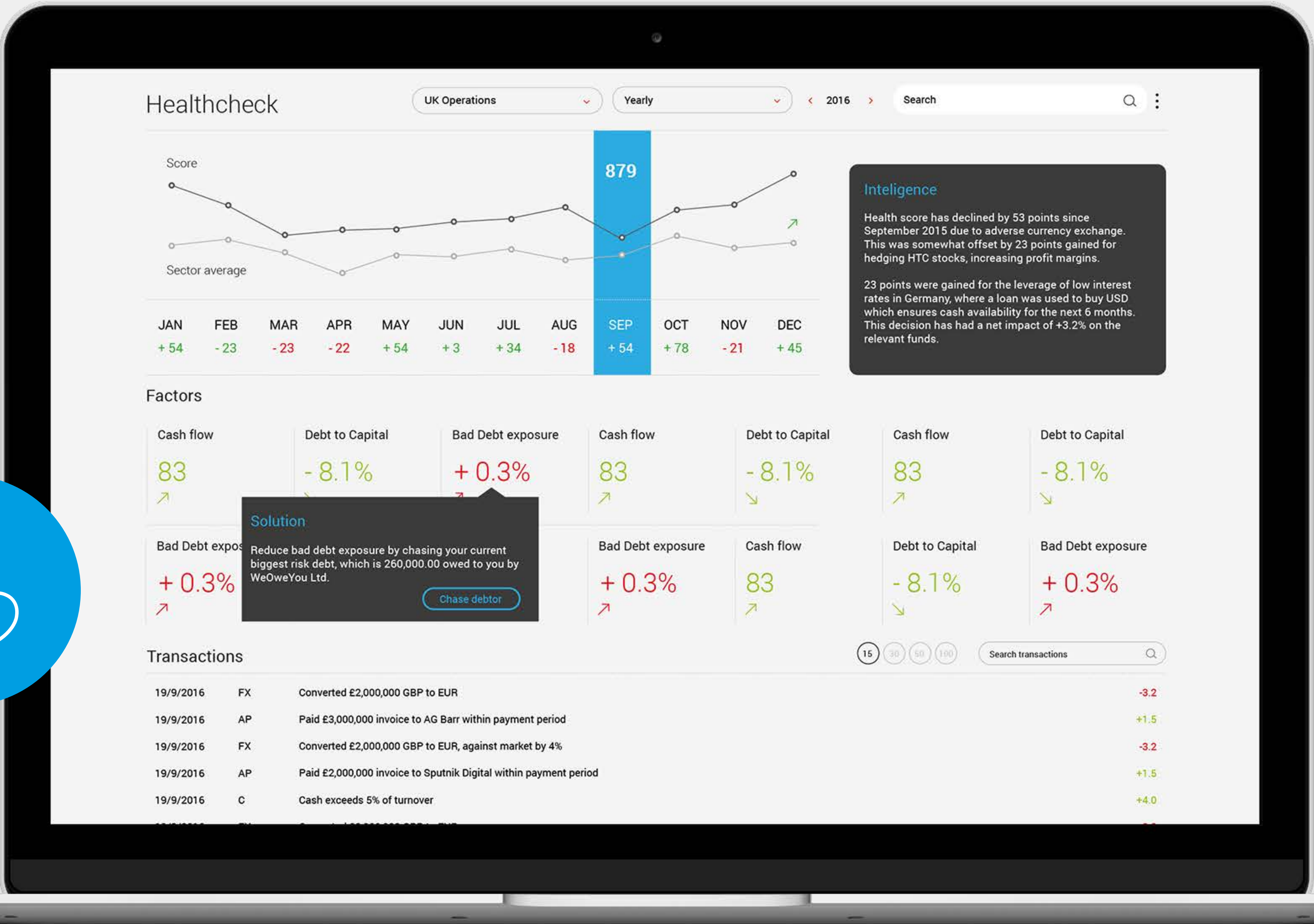




Features

Health Check

- Micro scores for hundreds of behaviours, aggregated to give an overall score
- Using complex algorithms
- Replacement for “old” credit scoring





Features

Actions

Anika can use Actions to set up complex or repetitive tasks. These can either be turned on to repeat, scheduled or require triggers, such as movements in Xchange rates.





# Actions

- Schedule / Triggers
- Automate tasks
- Notifications

DashAccountsAssetsAlertsActionsHealthcheck

Hi Andy | Logout

Actions

+ Create a new action

Search actions

Daily bank balance

ON

IfTimeEquals0900Then

EmailMe, David, MarieAccount balance

+

Daily bank balance

ON

IfTimeEquals0900Then

EmailMe, David, MarieAccount balance

+

AndOr

SendFinancial reporttoFinance department

+

## Features

### Buffet Finance

Peter needs to balance the accounts in order for a large invoice to go out. He has several options at his disposal.

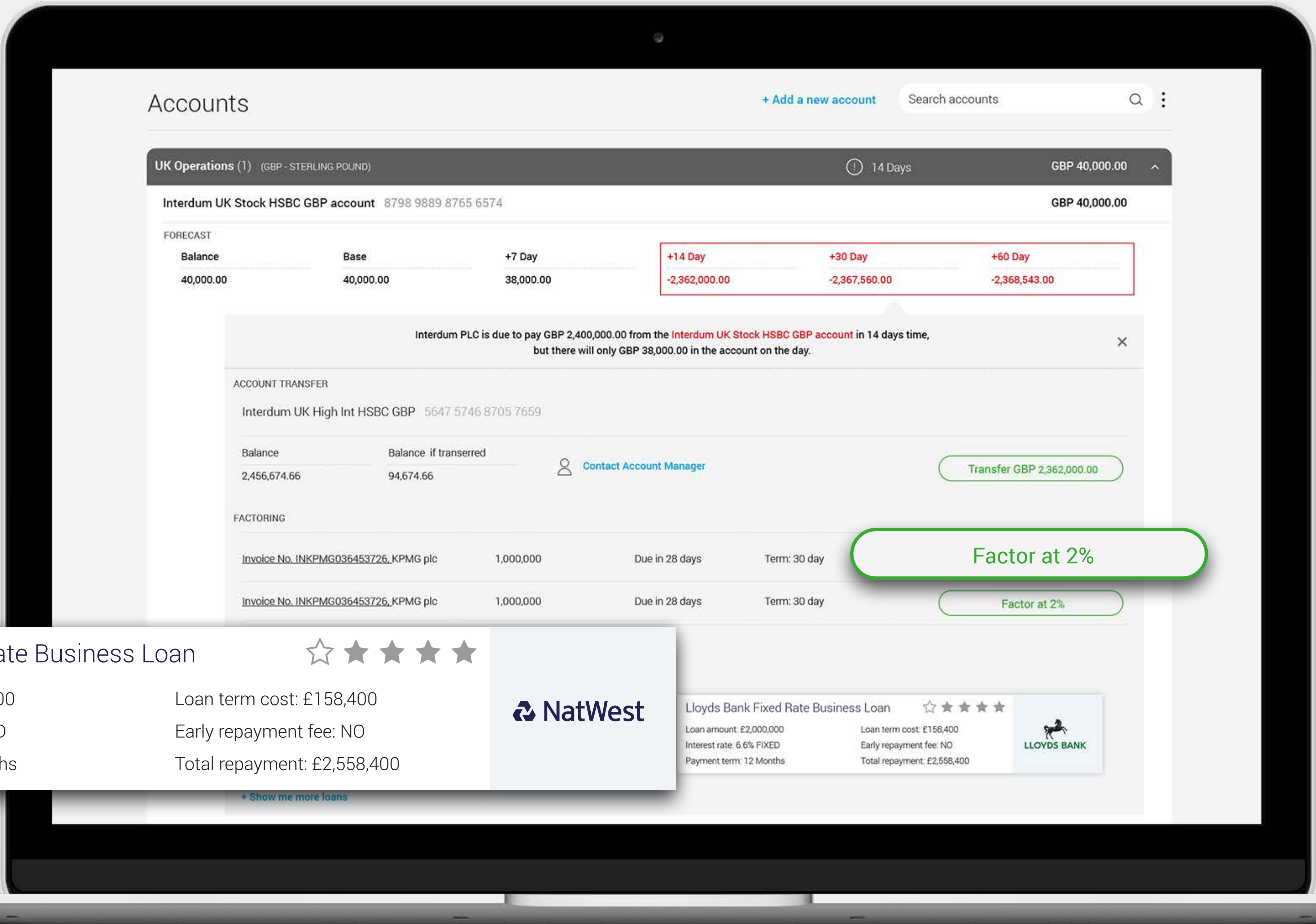




Features

Buffet Finance

- Forecasting cash flow based on account and machine learning data
- Selection of option to mitigate problems
- Whole market choice
- Peer lending



Features

Bots

Anika can use the Bot to pull reports, KPI's and inline data. She can also the Bot to retrieve Financial Products, Loans and action payments.





Features

Bots

- Request KPIs and reports via chat instead of dashboard

B

Bot

Is this the invoice you are referring to?


Invoice No. INKPMG036453726

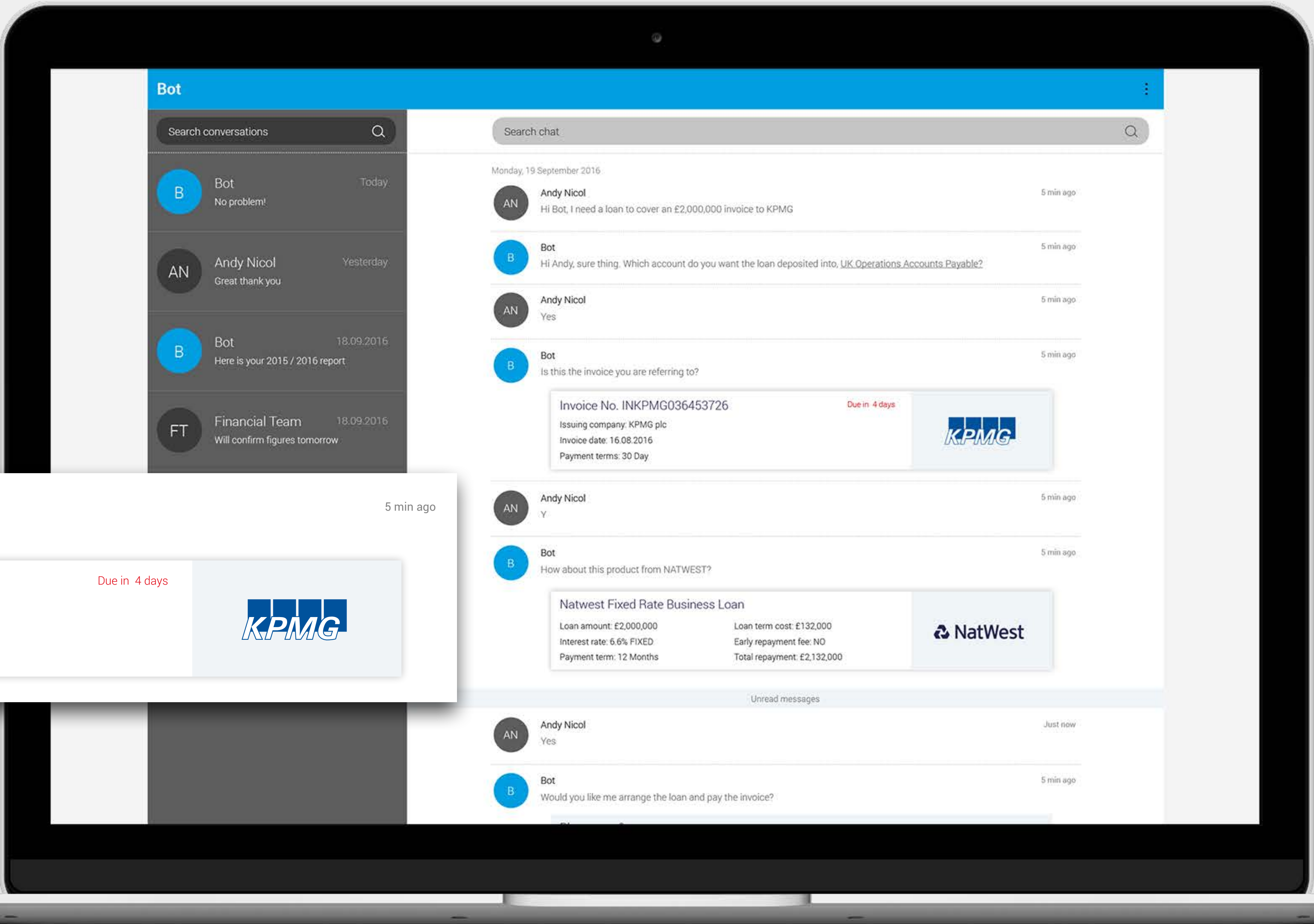
Due in 4 days

Issuing company: KPMG plc

Invoice date: 16.08.2016

Payment terms: 30 Day







## Other Ideas

- Early payment offer
- Unified comms



## Take aways

- Build features not platforms
- Corporate is very different from consumer and business banking
- Think outside of banking



# Thank you

sputnik.digital

---

Andy Nicol

andy@sputnik.digital

07713 119699

**SPUTNIK**  
PRECISION **DIGITAL** ENGINEERING

Unit 4.1 Waulk Mill, 51 Bengal St, Manchester M4 6LN